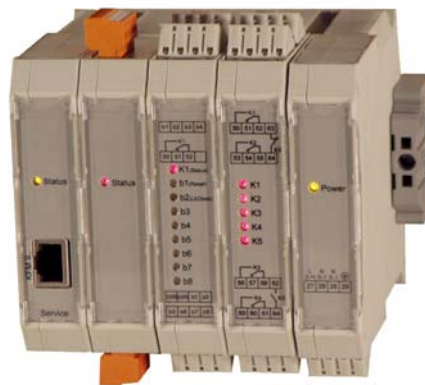




programmable logic control KFM 803



Hardware-expansion modules 852...

General:

KFM 803 is a compact- control with integrated, arbitrary expandable hardware, for medium size control tasks. The special advantage of this series lies in the fact that there is no specific programming knowledge required. The graphical programming software provides the creation of applications in a quick and easy way. Furthermore, operating and visualization is integrated in the the device- version 803, so that separate operating- and display units are unnecessary. Optionally with touch operation.

The housing in control panel format 96x96mm contains a variety of possible analogue and binary in- and outputs and other additional functions. There are several interface- adapters for the communication with control systems available. The display is switchable from the normal view (values, status) to pages for data logger, binary message lists, history or further, custom specific pages as well as ready to use elements and bitmaps.

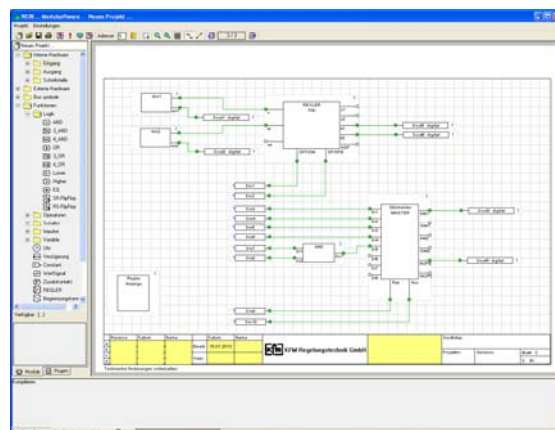
The devices are optionally programmed ready for operation according to the customers´ needs.

Graphical programming software for easy configuration:

The KFM module software provides the creation, visualization and parameterization by graphical elements of projects based on the series 803..

Possible range of functions (extract):

Impulse-, switching-, logic or control functions, also custom specific, operators, interface functions, real time clock.



Configuration of the controller display:

The factory- preadjusted display pages of the TFT- display can be optionally freely designed. Process indicated diagrams and custom specific logos can be uploaded as a bitmap file easily.

